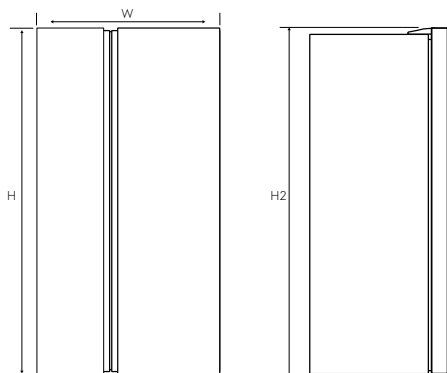


# Dimension Guide

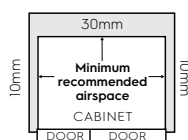
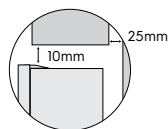
## Side By Side Fridge

**Model:**

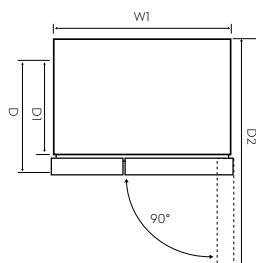
ESE5441A-A



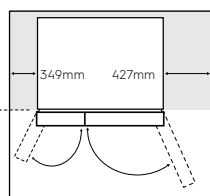
**Minimum Recommended Airspaces**



**Please note:** Doors are designed to sit proud of cabinetry (not flush).



Front face of bench aligned to front corner edge of cabinet.

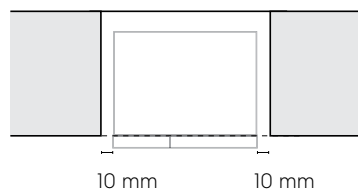


When positioned in a corner area, spacing of at least 427mm on the right hinge side and 349mm on the left hinge side will allow the doors to open enough to enable the removal of bins and shelves.

**Installation options:**

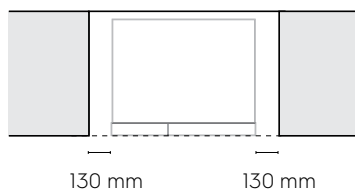
**Front of fridge in line with kitchen cabinet**

Side clearance must be 10mm either side of the fridge, to have the fridge doors siting proud of the kitchen cabinetry.



**Fridge door flush with the cabinetry**

Side clearance must be 130mm either side of the fridge, to have the fridge doors siting flush with the kitchen cabinetry



Side by side models	Door width (W)	Total depth (D)	Maximum height (H)	Cabinet width (W1)	Cabinet depth (D1)	Depth door open (D2)
ESE5441A-A	836	706	1780	833	624	1090

**Important!** Please ensure that the access to your kitchen (including doorways, corridors, island benches, etc) allows sufficient clearance to move your fridge into position.

**Please note!** Dimensions to be used as a guide only. All customers MUST refer to the user manual supplied with the product for detailed installation instructions.

© 2022 Electrolux S.E.A PTE. LTD. E\_Dim\_ESE5441A-A\_May22